

Cases & Carts

BackPack Tool Pak™ Tool Case

For hands-free carrying of over 100 tools in specially designed pockets and panels. Made from top-grade, 1000 denier Cordura with heavy stitching to withstand tough jobs and harsh use.

No. PAE-90650\$99.97

For higher quantities, call for quote.



Tools not included

Tool Tote™ & ProTote™

Made from black and red 1000 denier Cordura®, the Tool Tote™ has 14 exterior pockets for easy accessibility and padded handles. The ProTote has 28 pockets, 16 inside and 12 outside, padded handles that wrap around the entire bag, a hard bottom to keep shape, and a large opening.

Tool Tote™ w/strap

12.5" x 7.5" x 5.5"

No. PAE-93200\$24.97

ProTote™ w/strap

16.5" x 9" x 12"

No. PAE-96600\$39.97



Mobile Workbench & Storage System

Four compartmentalized boxes for storing assorted parts and hardware. Two storage bins hold essential hand tools and supplies. 6" casters. Flat surface top.

No. RUB-618000-BLACK\$500.00



Folding Platform Carts

Carts have covered non-slip steel base with fold down steel handles and interlocking aluminum frames. All have bumpers and 4" casters: 2 swivel, 2 rigid.

600 lb. Capacity Platform Cart, 41 lbs

No. WES-272035.....\$282.20

400 lb. Capacity Platform Cart, 28 lbs.

No. WES-272019.....\$154.30



The Cart that Virtually Disappears yet Holds up to 300 lbs

These carts collapse to just 20 inches -perfect for fitting on airplanes. REM-800 model offers extra stability and back-support with two fold-down 3" swivel-bearing caster wheels. REM-600 has the advantage of being slightly lighter and is ideal for air travel. Each model extends to 49" and collapses to just 20" with a 12.5" platform base. REM-600 weighs only 12 lbs. and the REM-800 weighs just 17 lbs. Both support up to 300 lbs., come with permanently attached elastic tie downs, rubber rimmed wheels, and 5-year warranty. REM-200 supports up to 150 lbs.

No. REM-200 Concorde II Cart\$111.36

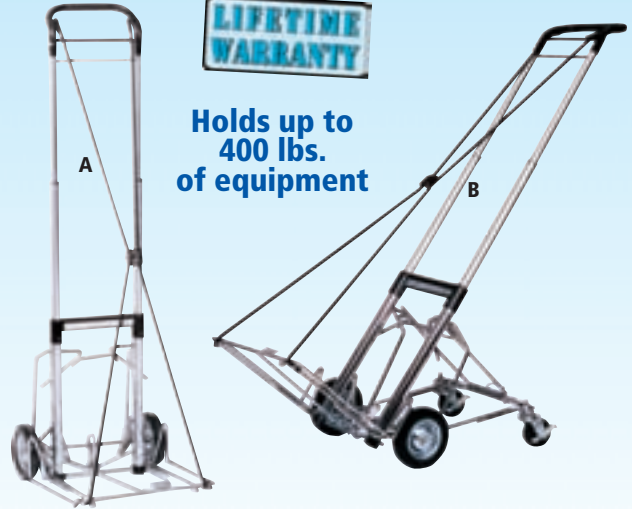
No. REM-600 Commander Cart\$222.72

No. REM-800 Commander I Cart\$281.60



LIFETIME WARRANTY

Holds up to
400 lbs.
of equipment



NorrisProducts CORPORATION

Workhorse Carts

- 52" maximum height
- Widest diameter aluminum tubes
- 37" optional height
- Automatic locking load tray latch
- Double welded chrome plated base
- Adjustable securing cords with safety loops
- Rubber tires w/steel rims, steel raceways and steel ball bearings
- Parallel stair glides
- Rubber safety capped tubes
- Squeeze handle release

Heavy Duty Two-Wheel Cart

Carries up to 400 lbs., glides up and down steps and curbs, yet closes in a single motion to fit under airline seats. A modular accessory shelf and rear wheels can be added later to enhance its carrying capabilities. Weight: 16 lbs.

No. CLP-770-3\$135.92

Heavy Duty Four-Wheel Cart

Offers all the features of the 770-3 plus a unique removable rear wheel assembly to support large loads. Wide rear wheel base gives greater stability, and folds up flush to fit airline carry-on requirements. Brakes on rear wheels and spring locks assure worry free use. Weight: 20 lbs.

No. CLP-880-3\$151.97

Prices in this catalog are effective January 1, 2012. While we attempt to hold prices, we cannot control when our vendors increase prices. We reserve the right to correct misprints.

CRAFTSMAN

Durable Plastic Tool Boxes

Will take years of use and abuse! Made of high quality plastic, includes self-contained portable tool trays.



Cat. No.	Overall Dimensions (w x d x h)	Tray Height	Cover Hinge	Price
CRF-9-65431	17" x 9-1/4" x 9"	2-3/4"	Full Steel	\$15.12

SST2® Sit/Stand/Tote Truck

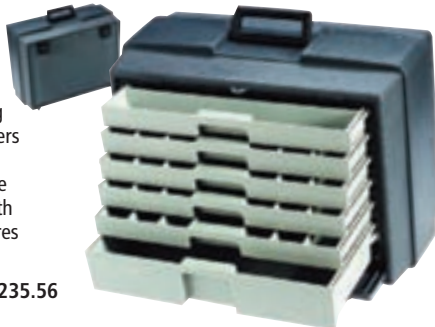
Ideal for transporting tools, equipment, and more. Unique hand-truck design makes the new SST2 a breeze to maneuver. Made of high-impact polypropylene, it has a skid resistant surface allowing a standing capacity of up to 350 pounds. Telescoping handle pulls out to 37". Big 5" wheels for easy maneuvering even over rough surfaces. Offers 5,081 cu. in. of storage including 10" of space in the bottom tub for bulk storage. A handy 4-3/4" H tote tray with handle for larger tools and accessories and 2" H divided tote tray for small tools and parts. Organizer and tote tray stack under lid. Comfortable top handle. Latches secure with padlocks (not included). Capable of using elastic tie-downs (not included) for transporting items on top. Measures 23-3/4" W x 17-3/4" D x 18-1/2" H.
No. CRF-9-59627\$89.62



Professional 6-Drawer Tool Cabinet

Features a sliding, self storing front door panel, and 6 drawers with dividers for up to 48 compartments. Special tongue and groove rails insure smooth operation of drawers. Measures 19.5" x 10.375" x 15".

No. FLA-2276-2\$235.56



CRAFTSMAN

3-Drawer Portable Chest

Durable high-impact plastic shell and tough steel drawers. Top compartment for larger items, molded-in side handles and durable top handle. 3 drawers. 23" W x 13-3/8" D x 10-1/2" H.

No. CRF-9-65628\$66.06



Flambeau Products

Conductive Tool Box

This molded copolymer tool box can't rust and is suitable for cleanroom use. Features: Positive action latches; Brass hinge and latch pins; molded-in padlock tabs; luggage-style handle. Tray dimensions: 12-1/4" L x 4-3/4" W x 1-1/2" D. (USA)
No. FLA-14800-2C\$65.33

Flambeau Products

Tool Brute®

Comfortable, full-grip handle, positive-action latches, solid brass pins, padlock tabs. Molded co-polymer resins provide rustproof, chemical resistant, non-conductive, rugged construction. Color: Gray. (USA)



- 14-1/2" L x 5-3/4" W x 7-1/4" D - 1 latch
No. FLA-6744HS\$15.28
- 16-5/8" L x 7-1/8" W x 8-3/4" D - 1 latch
No. FLA-6748HS\$27.40
- 20-1/4" L x 8-3/8" W x 8-7/8" D - 2 latches
No. FLA-6757HS\$32.98

AKRO-MILS

ProBoxes

Won't chip, crack, rust or corrode. Made of durable polypropylene with extra-large trays. Steel draw latches close securely and have an oversized eye for larger padlocks. 14" L x 8.08" W x 8.125" H
No. AKR-09514\$14.95



Master Lock

Locks

Each rust-proof lock comes in a laminated steel case.



- A. No. MAP-105D 1-1/8" Wide Padlock\$2.90
- B. No. MAP-7 1-1/8" Wide Padlock with Reinforced 4-Pin Tumbler\$10.45
- C. No. MAP-10 1" Wide Padlock\$2.66
- D. No. MAP-1500 Combination Lock\$5.64